



**TKI**

**PT TOYO KANETSU INDONESIA**

---

**Steel Products Fabrication**



## *Steel Products Fabrication*

Since the establishment of its first fabrication shop in 1978 at Batam Island, Indonesia, TKI has been focusing on the supply of steel parts and components for various types of storage tanks. Now Batam Plant enjoys a high reputation among the customers for its excellent fabrication quality that fully satisfies the job requirements of any international projects. **With such a long and broad experience in this field, we can offer first class steel fabrication service on a make-to-order basis as well.**





# Products

## **Prefabricated Atmospheric Tank**

[4m Dia. x 4.4m High, Carbon Steel]



## **Prefabricated Spherical Tank**

[8.8m Dia. X 11m High, Carbon Steel]



## **Shell Plate for Atmospheric Tank**

[Carbon Steel]



## **Shell Plate with Column for Spherical Tank**

[Carbon steel]



## **Shell Plate with Nozzles for Atmospheric Tank**

[Carbon steel]



## **Shell Plate with Nozzles for Spherical Tank**

[Carbon steel]





# Products

## Hopper for Perlite Filling

[Carbon steel]



## Reactor

[Carbon steel]



## Dome Roof Plate

[Carbon steel]



## Center Ring for Dome Roof Tank

[Carbon steel]



## Roof Structure

[Carbon steel]



## Stage Frame

[Carbon steel]





**Corner Anchor with Stud Dubel**  
[Carbon steel]



**Pontoon Manhole**  
[Carbon steel]



**Roof Drain Sump**  
[Carbon steel]



**Drain Pipe**  
[Carbon steel]



**Bracing**  
[Carbon steel]



**Guide Pipe**  
[Carbon steel]





# Products

## Pipe & Support

[Carbon steel]



## Steel Crate

[Carbon steel]



## Spreader Bar

[Carbon steel]



## Rolling Channel

[Carbon steel]



## Rebar Mat

[Carbon steel]





**Intermediate Part of LNG Inlet Pipe**  
[9% Nickel steel]



**Funnel of LNG Inlet Pipe**  
[9% Nickel steel]



**Center Ring for Dome Roof Tank**  
[9% Nickel steel]



**Reducer of LNG Inlet Pipe**  
[9% Nickel steel]



**Anchor Strap**  
[9% Nickel steel ,Stainless steel]



**Roof Structure**  
[9% Nickel steel]





# Products

## **Nozzle for LNG Tank**

[9% Nickel steel, Stainless steel]



## **Pad Plate**

[9% Nickel steel]



## **Roof Block**

[18m Long x 5.4m Wide x 0.9m High,  
7% Nickel steel]



## **Shell Plate**

[13m Long x 4.4m Wide x 0.5m High,  
7% Nickel steel]



## **Duct**

[Stainless steel]



## **Miter Elbow**

[Stainless steel]





**Seawater Pipe**

[Duplex stainless steel]



**Seawater Pipe**

[Duplex stainless steel]



**Blind Flange**

[Stainless steel]



**Silo**

[7.8m Dia. x 20m High, Stainless steel]



**Distributor**

[Stainless steel]



**Dryer**

[Stainless steel]





# Products

## **Pump Barrel**

[Stainless steel]



## **Pump Barrel Support**

[Stainless steel]



## **Internal Pipe for LNG Tank**

[Stainless steel]



## **Spill Protection Pan**

[Stainless steel]



## **Plate Flange**

[Stainless steel]



## **Galvanized Anchor Plate**

[Carbon steel]





**Galvanized Stage Frame**  
[Carbon steel]



**Galvanized Column**  
[Carbon steel]



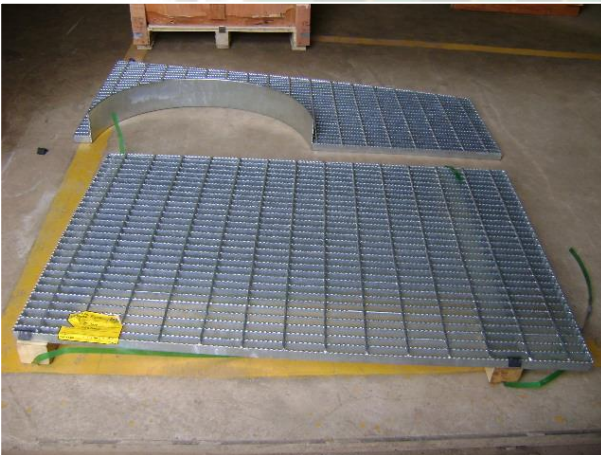
**Water Spray Pipe**  
[Carbon steel]



**Galvanized Staircase**  
[Carbon steel]



**Grating**  
[Carbon steel]



**Galvanized Handrail**  
[Carbon steel]





# Products

## **Bumper**

[Brass, Carbon steel]



## **Seal Plate**

[Brass]



## **Internal Access Way for LNG Tank**

[Aluminum]



## **Internal Staircase for LNG Tank**

[Aluminum]



## **Deck Nozzle**

[Aluminum]



## **Deck Manhole**

[Aluminum]





# Major Plant Equipment

## EQUIPMENT LIST (1/2)

No.	Equipment	Specification	Qty
1	Pressing Machine	1,600 ton	1
		1,300 ton	1
		1,000 ton	2
		500 ton	1
		200 ton	1
		100 ton	1
2	CNC Plate Bending Machine	Width 4.0 m	1
3	WEBB Plate Bending Machine	Width 3.0 m	1
4	KUMLA Plate Bending Machine	Width 2.5 m	1
5	FUJICAR Plate Bending Machine	Width 3.0 m	1
6	TLH-400P Angle Bending Machine	Max. H390 x 300	1
7	THL-5 Angle Bending Machine	Max. H200 x 200	1
8	THL-4 Angle Bending Machine	Max. H125 x 125	1
9	NC Plasma Cutting Machine	50 mm x 4.5 m x 18.3 m	2
10	Portable CNC Cutting Machine	25 mm x 1.0 m x 1.5 m	1
11	GT 7010 CNC Bandsaw Cutting Machine	Depth 1,000 mm	1
12	ST 6090 Bandsaw Cutting Machine	Depth 900 mm	1
13	ST 5070 Bandsaw Cutting Machine	Depth 500 mm	1
14	Straightening Press Machine for H-beam	1,000 Nm <sup>3</sup> /h	1
15	Gantry Crane	30 ton	4
		20 ton	6
		16 ton	1
		12 ton	4
		8 ton	11
		5 ton	2
16	Overhead Crane	10 ton	3
		5 ton	2
		3.2 ton	1
		2 ton	1
17	Crawler Crane	90 ton	1
		50 ton	3
18	Semi Gantry Crane	8 ton	1
		5 ton	5
		3.2 ton	1
19	Automatic Welding Machine		6
20	Stud Welding Machine		2



# Major Plant Equipment

## EQUIPMENT LIST (2/2)

No.	Equipment	Specification	Qty
21	Gouging Machine		4
22	Plasma Cutting Machine		14
23	Angle Cutting Machine		2
24	Upright Drill Machine	φ6-55 mm	5
25	Radial Boring Machine		2
26	Punching Machine	φ10-24 mm	2
27	Auto Edge Planer for Plate		9
28	Auto Edge Planer for H-beam		2
29	Post Weld Heat Treatment Furnace	4.0 m x 4.0 m x 14.0 m	1
30	AC Welding Machine		100
31	DC Welding Machine		2
32	TIG Welding Machine		17
33	MIG Welding Machine		12
34	MAG Welding Machine		36
35	Forklift	7 ton	2
		5 ton	3
36	Aerial vehicle		1
37	Trailer	20 ton	3
38	Truck	5 ton	3
39	Lathe Machine	TK1060	2



# **PRESSING MACHINE** ※No.1

## **1,600 Ton Pressing Machine (1 unit)**

Plate size	Three-dimensional curved surface
Width	4.6 m
Length	10 m
Thickness	100 mm (CS)
	50 mm (Ni)
Weight (Max.)	30 ton



Plate size	Two-dimensional curved surface
Width	5.0 m
Length	20 m
Thickness	100 mm (CS)
	50 mm (Ni)
Weight (Max.)	60 ton



## **1,300 Ton Pressing Machine (1 unit)**

Plate size	Three-dimensional curved surface
Width	4.6 m
Length	10 m
Thickness	80 mm (CS)
	40 mm (Ni)
Weight (Max.)	25 ton



Plate size	Two-dimensional curved surface
Width	5.0 m
Length	20 m
Thickness	80 mm (CS)
	40 mm (Ni)
Weight (Max.)	50 ton

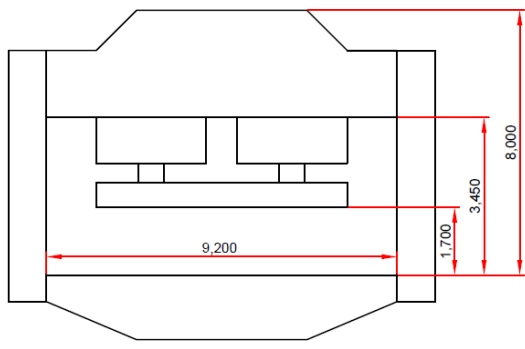




# Major Plant Equipment

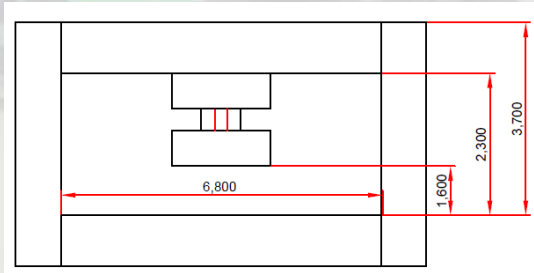
## 1,000 Ton Pressing Machine (2 units)

Plate size	Three-dimensional curved surface
Width	3.4 m
Length	12 m
Thickness	60 mm (CS)
	30 mm (Ni)
Weight (Max.)	20 ton



1,600Ton & 1,300Ton

Plate size	Two-dimensional curved surface
Width	5.0 m
Length	15 m
Thickness	60 mm (CS)
	30 mm (Ni)
Weight (Max.)	30 ton



1,000Ton





# PLATE BENDING MACHINE

## CNC Plate Bending Machine(1 unit) ※No.2

Width	4.0 m
Thickness	16 mm (Ni), 18 mm (CS)
Min. Diameter	1,037 mm (Outer), 1,005 mm (Inner)
Top Roll	480 mm Dia.
Weight	12 ton



## WEBB Plate Bending Machine (1 unit) ※No.3

Width	3.0 m
Thickness	25 mm (Ni), 40 mm (CS)
Min. Diameter	560 mm (Inner)
Top Roll	508 mm Dia.
Weight	20 ton



Width	2.5 m
Thickness	12 mm (CS)
Min. Diameter	350 mm (Inner)
Top Roll	295 mm Dia.
Weight	8 ton





# Major Plant Equipment

## FUJICAR Plate Bending Machine (1 unit) ※No.5

Width	3.0 m
Thickness	32 mm (CS)
Min. Diameter	Half round (Shell plate only)
Top Roll	500 mm Dia.
Weight	20 ton



## ANGLE BENDING MACHINE

### TLH-400P ※No.6 Angle Bending Machine (1 unit)

### TLH-5 ※No.7 Angle Bending Machine (1 unit)

### TLH-4 ※No.8 Angle Bending Machine (1 unit)





# **CUTTING MACHINE**

## **NC Plasma Cutting Machine** **(1 unit) ※No.9**

Width	4.5 m
Length	18.3 m
Thickness	50 mm
Weight	50 ton



## **Portable CNC Cutting Machine** **(2 unit) ) ※No.10**

Width	1.0 m
Length	1.5 m
Thickness	25 mm



Cutting Depth	Up to 1,000 mm
Weight	10 ton





# Major Plant Equipment

## ST 6090 Bandsaw Cutting Machine (1 unit) ※No.12

Cutting Depth	Up to 900 mm
Weight	10 ton



## ST 5070 Bandsaw Cutting Machine (1 unit) ※No.13

Cutting Depth	Up to 500 mm
Weight	10 ton



## STRAIGHTENING PRESS MACHINE

### Straightening Press Machine for H-beam (1 unit) ※No.14



# **CRANE**

## **Gantry Crane (28 units) ※No.15**



## **Overhead Crane (7 units) ※No.16**



## **Crawler Crane (4 units) ※No.17**





# Lathe Machine

## PRO-TAKANG TK-1060

### Lathe Machine PRO-TAKANG TK-1060

Center high	530 mm
Swing over bed	1060 mm
Swing over cross slide	750 mm
Swing over gap	1610mm
Width of gap	570mm
Width of bed	560mm



# Special Processing

## 3-D FORMING



Batam Plant processes thick steel plates into 3-D formed plates with its know-how and techniques of pressing from accumulated over long experience in steel fabrication.





## **STEEL SHAPES BENDING**



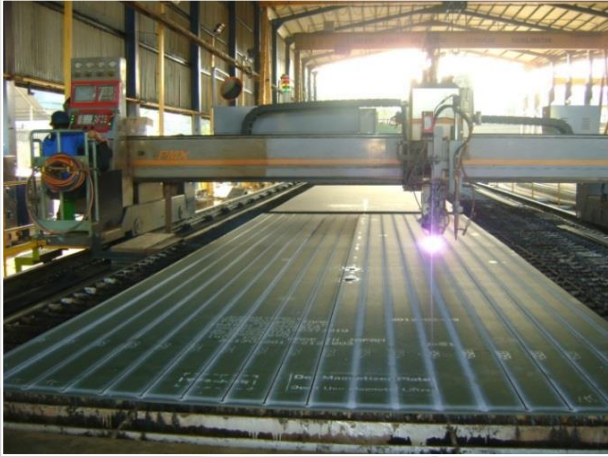
Batam Plant can process most of shaped steel products, e.g. Pipes, H-beams, I-beams, Angles and Channels, with different types of cold bending machines to the exact requirements of every customer.





# Special Processing

## **H-SHAPE BEAM MANUFACTURING**



**Batam Plant can process 7%-9% Nickel Steel and Stainless Steel plates into H-beams with our unique welding and pressing techniques.**





## **LARGE SCALE PREFABRICATION**



**Batam Plant has ample experience in large-scale offsite-prefabrication that contributes to reduction of both site man-hour and construction time.**





# Special Processing

## POST WELD HEAT TREATMENT



Our Furnace has enough capacity to accommodate large plate and can perform PWHT around-the-clock with flawless thermal control.

Furnace	
Length	14.0 m
Width	4.0 m
Height	4.0 m
Weight	50 ton





# PAINTING



Batam Plant is equipped with state-of-the-art painting facilities as well as enough number of painting chambers to ensure high quality painting and swift delivery to our valued customers.

	Manual Blast Chamber	Auto Blast Chamber
Width	5.5 m	2.4 m
Length	12.0 m	20.0 m
Height	3.5 m	1.0 m



# Special Processing

## WELDING

Machine Welding



SMAW



GTAW



FCAW / GMAW



SAW



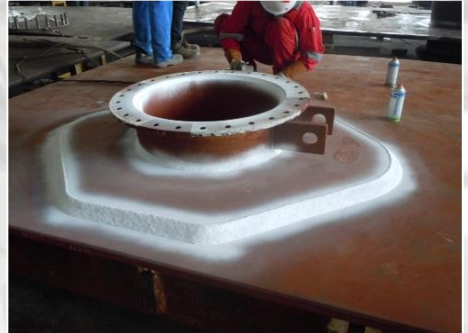
Stud Welding





# **NONDESTRUCTIVE TESTING**

## Penetrant Testing



## Magnetic Particle Testing



## Radiographic Testing



# Certificates

Category	Certificate Name	Qty.
Painting	NACE Coating Inspector Lv. 2	1
Painting	Blaster- Painter	5
QC/QA	Magnetic Particel Testing (MT) Lv. 2	9
QC/QA	Liquid Penetrant Testing (PT) Lv. 2	16
QC/QA	Ultrasonic Testing (UT) Lv. 2	3
QC/QA	Radiographic Interpreter (RI) Lv. 2	4
Welding	AWS Welder 1G	9
Welding	AWS Welder 2G	5
Welding	AWS Welder 3G	28
Welding	AWS Welder 6G	27
Welding	AWS Welder 2F	16
Welding	AWS Welder 4F	9
Welding	ASME Welder 1G	16
Welding	ASME Welder 2G	82
Welding	ASME Welder 3G	129
Welding	ASME Welder 4G	15
Welding	ASME Welder 5G	4
Welding	ASME Welder 6G	31
Welding	CSWIP 3.0	4
Welding	CSWIP 3.1	0
Welding	CSWIP 3.2	1




# Certificates

Description of Certificate	Certifying Institute	Certificate Ref. No.
ISO 9001:2015	Lloyd's Register - Quality Assurance	34530 10069649
ISO 14001:2015	Lloyd's Register - Quality Assurance	10195971
ISO 45001:2018	Lloyd's Register - Quality Assurance	10305087
ASME U STAMP	ASME	34530
ASME U2 STAMP	ASME	34531
Japan Electricity Utilities Industry Law, Welding Management Process	Japan Power Engineering and Inspection Corporation	GPC-43

## ISO 9001:2015

 **Lloyd's Register**



### Certificate of Approval

This is to certify that the Management System of:  
**PT Toyo Kanetsu Indonesia**  
Jl. Tenggilis Batu Ampar, Batam, 29452, Indonesia  
has been approved by LRQA to the following standards:  
ISO 9001:2015

  
Basem Obaid - Area Operations Manager  
Issued By: PT. Lloyd's Register Indonesia  
for and on behalf of: Lloyd's Register Quality Assurance Limited

Current Issue Date: 2 April 2018  
Expiry Date: 3 April 2021  
Certificate Identity Number: 10069649

Original Approvals:  
ISO 9001 – 4 April 2008

Approval Number(s): ISO 9001 – 0044455

The scope of this approval is applicable to:  
The Fabrication and Construction of Metal Products



Page 1 of 1

## ISO 14001:2015

 **Lloyd's Register**



### Certificate of Approval

This is to certify that the Management System of:  
**PT TOYO KANETSU INDONESIA**  
Jl. Tenggilis Batu Ampar, Batam, 29452, Indonesia  
has been approved by LRQA to the following standards:  
ISO 14001:2015

  
Basem Obaid - Global Head of Training and Improvement Services  
Issued by: PT. Lloyd's Register Indonesia  
for and on behalf of: Lloyd's Register Quality Assurance Limited

Current issue date: 3 June 2019  
Expiry date: 2 June 2022  
Certificate identity number: 10195971

Original approval(s):  
ISO 14001 – 3 June 2019

Approval number(s): ISO 14001 – 00020578

The scope of this approval is applicable to:  
Fabrication and construction of metal product.



Page 1 of 1

## ISO 45001:2018

 **Lloyd's Register**



### Certificate of Approval

This is to certify that the Management System of:  
**PT TOYO KANETSU INDONESIA**  
Jl. Tenggilis Batu Ampar, Batam, 29452, Indonesia  
has been approved by Lloyd's Register to the following standards:  
ISO 45001:2018

Approval number(s): ISO 45001 – 00012728

The scope of this approval is applicable to:  
- fabrication and construction of metal product

  
Lutfi Cuhna  
Area Operations Manager - QA/CA  
Issued by: PT. Lloyd's Register Indonesia  
for and on behalf of: Lloyd's Register Quality Assurance Limited

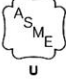



Page 1 of 1

# Certificates

## ASME U & U2 STAMP

The American Society of Mechanical Engineers


**CERTIFICATE OF AUTHORIZATION**


The named company is authorized by the American Society of Mechanical Engineers (ASME) for the scope of activity shown below in accordance with the applicable rules of the ASME Boiler and Pressure Vessel Code. The use of the certification mark and the authority granted by this Certificate of Authorization are subject to the provisions of the agreement set forth in the application. Any construction stamped with this certification mark shall have been built strictly in accordance with the provisions of the ASME Boiler and Pressure Vessel Code.

**COMPANY:**  
PT TOYO KANETSU INDONESIA  
Jl. Tenggiri No. 157, Batu Ampar  
Batam 29452  
Indonesia



**SCOPE:**  
Manufacture of pressure vessels at the above location and field sites controlled by the above location (This authorization does not cover impregnated graphite)

**AUTHORIZED:** April 26, 2019  
**EXPIRES:** June 1, 2022  
**CERTIFICATE NUMBER:** 34,530

  
 Board Chair, Conformity Assessment

  
 Managing Director, Conformity Assessment

The American Society of Mechanical Engineers


**CERTIFICATE OF AUTHORIZATION**


The named company is authorized by the American Society of Mechanical Engineers (ASME) for the scope of activity shown below in accordance with the applicable rules of the ASME Boiler and Pressure Vessel Code. The use of the certification mark and the authority granted by this Certificate of Authorization are subject to the provisions of the agreement set forth in the application. Any construction stamped with this certification mark shall have been built strictly in accordance with the provisions of the ASME Boiler and Pressure Vessel Code.

**COMPANY:**  
PT TOYO KANETSU INDONESIA  
Jl. Tenggiri No. 157, Batu Ampar  
Batam 29452  
Indonesia

**SCOPE:**  
Manufacture of Class 1 and Class 2 pressure vessels at the above location and field sites controlled by the above location



**AUTHORIZED:** April 26, 2019  
**EXPIRES:** June 1, 2022  
**CERTIFICATE NUMBER:** 34,531

  
 Board Chair, Conformity Assessment

  
 Managing Director, Conformity Assessment

## JAPEIC - Certificate of the Welding Management Process

The American Society of Mechanical Engineers

**CERTIFICATE OF THE WELDING MANAGEMENT PROCESS**

This is to certify that the welding management process [System of Type 5, ICS : 25.160.01] to manufacture (weld) the Electrical Facilities specified by Paragraph 1 of Article 52 of the Electricity Utilities Industry Law is conformed with prescribed certification criteria for the following certification scope. Authority of the Welding Factory and others granted by this certificate cannot be applied outside the scope of the provisions set forth in the application.


**Name and Address of the Company and the Welding Factory and others :**  
PT. Toyo Kanetsu Indonesia Batam Fabrication Plant  
Jl. Tenggiri Batu Ampar Batam 29452 Indonesia

**Certification Criteria :**  
JIS Z 3400 Based Criteria  
[Non-governmental Products Certification Standard for Weld Portions of the Electric Facilities (Thermal Power) :  
TNS-S3101-2011, Item 8.1 Quality Certification of Welding Factory]

**Certification Scope :**  
Weld portions of Pipes for Boilers and others, Heat Exchangers and others, and Liquefied Gas Facilities [Equipment for Thermal Power Generation (including Fuel Cell Generation)] [ICS : 27.010]  
Weld portions of Vessels for Heat Exchangers and others, and Liquefied Gas Facilities [Equipment which belong to Gas and Steam Turbine, and Steam Engine for Thermal Power Generation excluding Fuel Cell Generation] [ICS : 27.040]  
Weld portions of Vessels for Boilers and others, Heat Exchangers and others, and Liquefied Gas Facilities [Excluding Equipment which belong to Gas and Steam Turbine, and Steam Engine for Thermal Power Generation excluding Fuel Cell Generation] [ICS : 27.060.30]  
Weld portions of Vessels for Boilers and others, Heat Exchangers and others, and Liquefied Gas Facilities [Equipment for Fuel Cell Generation] [ICS : 27.070]

**Certification Number :** GPC-43  
**Certification Date :** June 27, 2017  
**Expires :** July 1, 2022

Japan Power Engineering and Inspection Corporation  
 General Manager  
 Management System&Product Certification Center

  
 Takamori Shimizu

The American Society of Mechanical Engineers




**APPENDIX TO THE CERTIFICATE OF THE WELDING MANAGEMENT PROCESS**

Details of Welding Management Process Certification are as follows.

- Name and Identification Number of the Quality Manual or Specification to be applied :  
Quality Plan  
(Applied Weld of Electrical Facility based on Japanese Power Supply Business Law Art 52)  
Document No. QC-001
- Branch Factories and Standing Construction Site under the same management system as the Welding Factory in respect of manufacturing technique and quality control :  
Batam New Fabrication Plant  
Jl. Krapu Batu Ampar Batam 29452 Indonesia
- Construction Site under the same management system as the Welding Factory in respect of manufacturing technique and quality control :  
Not Applicable
- Details of equipment :  
Following Machines, Equipment or Apparatuses for Thermal Power Generation and Fuel Cell Generation specified in Article 79 and Article 80 of the Enforcement Regulations of the Electricity Utilities Industry Law, Article 79 of the Enforcement Regulations  
(1) Following Machines, Equipment or Apparatuses for Thermal Power Generation (Excluding, however, that satisfies the other notice and the means of internal combustion power by using as heating medium liquefied gas to means of compact steam power.)  
(a) Boilers, Free-Standing Superheaters, Free-Standing Economizers, Steam Storage Equipment, Steam Receivers, Heat Exchangers, Vessels which belong to Gasifiers, or Liquefied Gas Storage Tanks, Liquefied Gas Carbotainers, Gas Holders, Refrigerating Facilities (including and limited to Liquefied Gas Carbotainers and Oil Separators) which belong to Liquefied Gas Facilities (including and limited to those associated with Driving Force Facilities) [ICS : 27.040] [ICS : 27.060.30]  
(b) Pipes equal to or over 150mm outside diameter (including and limited to those associated with Liquefied Gas Fuel Facilities for Liquefied Gas Facilities) [ICS : 27.010]  
(2) Following Machines, Equipment or Apparatuses for Fuel Cell Power Generation  
(a) Vessels, Heat Exchangers, Reformers, over 200mm inside diameter and over 1000mm length or over 0.04m³ capacity. [ICS : 27.070]  
(b) Pipes equal to or over 150mm outside diameter [ICS : 27.010]

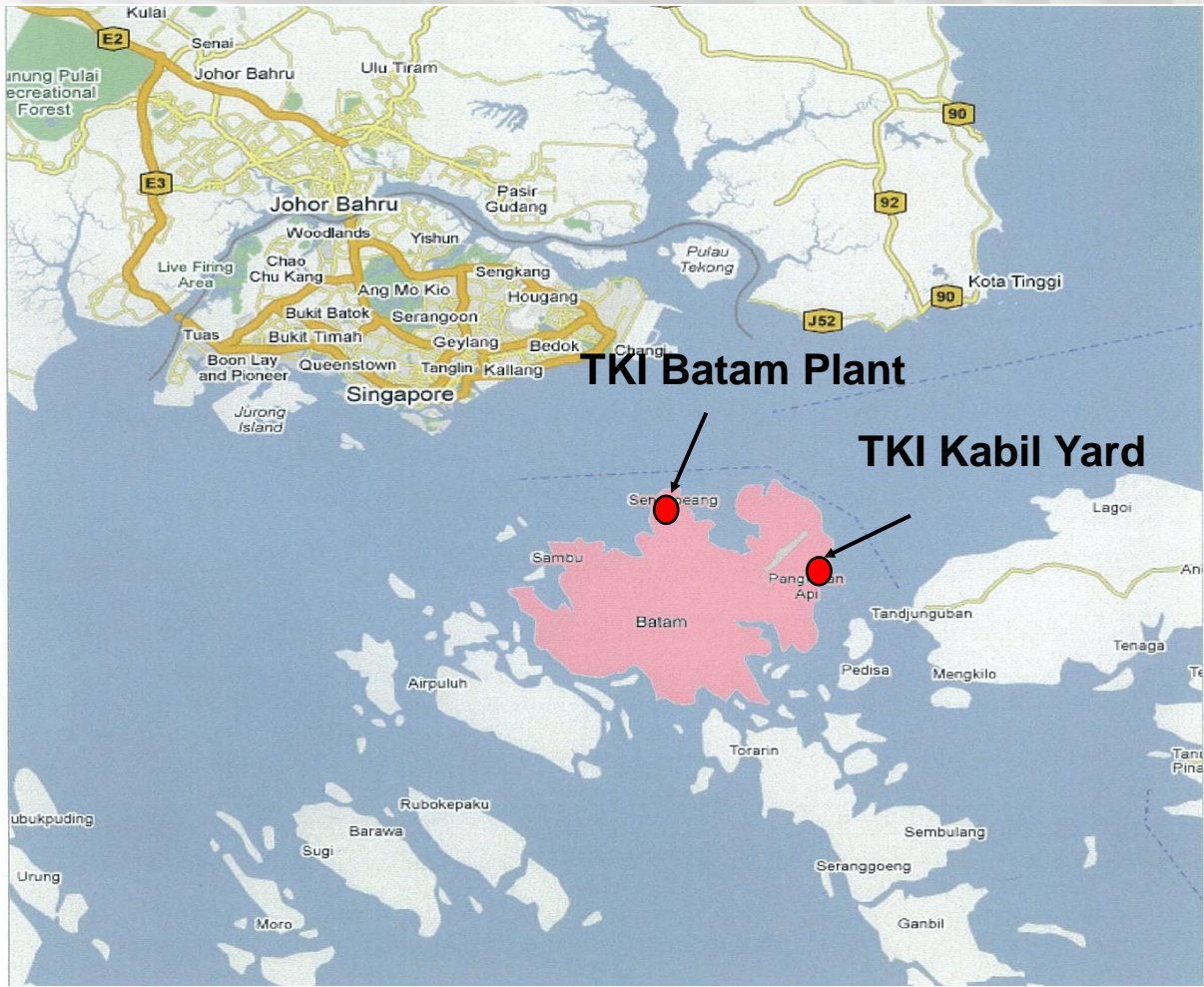
**Certification Number :** GPC-43  
**Certification Date :** June 27, 2017  
**Expires :** July 1, 2022

Japan Power Engineering and Inspection Corporation  
 General Manager  
 Management System&Product Certification Center

  
 Takamori Shimizu



# Location of TKI Batam Plant



Batam Island is located at about 1 hour from Singapore by ferry.



# Location of TKI Batam Plant



## **TKI - Main Shop**

Main Shop is located at Batu Ampar, 0.5km from the public jetty.  
Total Area : **26,600m<sup>2</sup>**



## **TKI - Shop 2**

5 minutes by car from Main Shop.  
Total Area : **20,000m<sup>2</sup>**



## **TKI - Shop 3**

Shop 3 is located at the opposite side of Main Shop across the road in front.  
Total Area : **41,000m<sup>2</sup>**



## **TKI - Kabil Yard**

Kabil Yard is located in Kabil Industrial Estate, 2.5km from the public jetty.  
Total Area : **50,000m<sup>2</sup>**





## **Contact us**

### **PT TOYO KANETSU INDONESIA**

#### **Head Office**

Address : Mid Plaza Building 1, 8th Floor, JL. Jend. Sudirman Kav. 10-11, Jakarta 10220, Indonesia

Phone : +62-21-570-7805 / 7739

Fax : +62-21-570-3950

E-mail : [tkibatam@pttki.com](mailto:tkibatam@pttki.com)

Website : <http://www.pttki.com/>

#### **Fabrication Plant**

Address : Jl. Tenggiri No. 157, Batu Ampar, Batam 29452, Indonesia

Phone : +62-778-412158 / 412159

## **Global network**

### **TOYO KANETSU K.K.**

Address : 11-1, Minamisuna 2-chome, Koto-ku, Tokyo 136-8666, Japan

### **TOYO KANETSU SINGAPORE PTE. LTD.**

Address : 16 Ayer Rajah Crescent #03-04 Tempco Technominium, 3rd Floor, 139965 Singapore

### **TOYO KANETSU (MALAYSIA) SDN. BHD**

Address : Sublot 51, 1st Floor Medan Jaya Commercial Centre 97000 Bintulu, Malaysia